



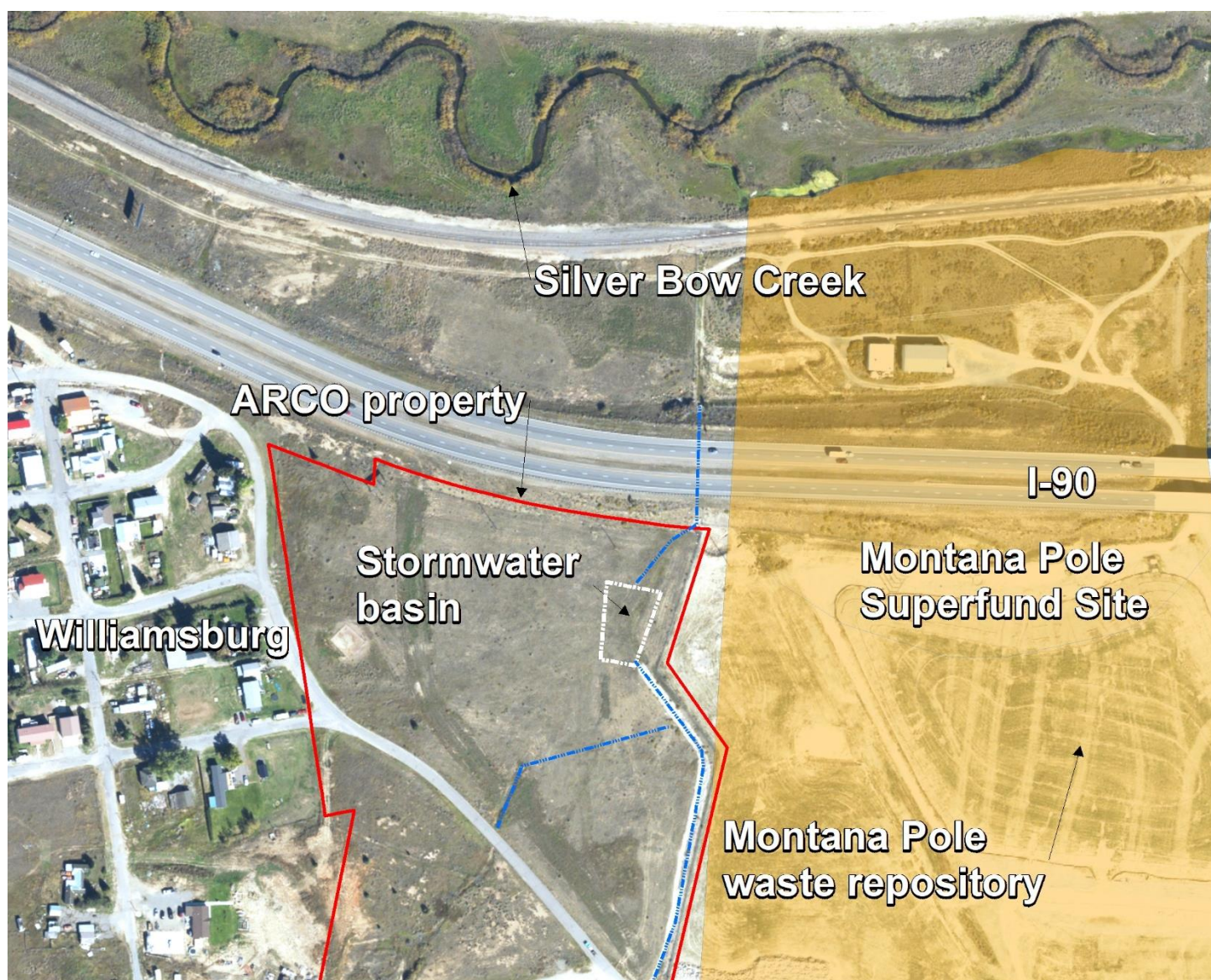
June 2025 Superfund Update

Recent Superfund Activity

Additional stormwater basin planned near Williamsburg

Atlantic Richfield is designing a new stormwater treatment basin for the area between the Williamsburg neighborhood and Montana Pole Superfund Site. This stormwater basin is being constructed under the “Uncontrolled Surface Flow Area” requirements of the 2020 Butte Priority Soils Consent Decree. The project will collect stormwater which drains a small watershed to the southwest. Stormwater treatment includes a sedimentation basin which will remove metals contaminated sediment and an infiltration basin to reduce storm flows to Silver Bow Creek. The basin is designed for the 6-month, 24-hour storm, with stormflow of slightly more than 2 cubic feet per second.

Map showing location of proposed stormwater basin



Grove Gulch

Work on the Grove Gulch sedimentation pond, which is presented in CTEC's Winter 2025 Superfund Update, is scheduled to resume in July 2025. The work was paused due to wet conditions limiting the ability to use heavy equipment in the area.

Publicly Observable Superfund Remedy Design Meetings

July 8 (Tuesday), 9:00-10:00 AM: Residential Metals Abatement Program (RMAP) Progress Meeting.

July 22 (Tuesday), 9:00-11:00 AM: Atlantic Richfield Remedial Design/Remedial Action Progress Meeting.

Publicly observable meetings can be accessed using EPA's Community Engagement Calendar here:

<https://www.epa.gov/butte/community-engagement-calendar>

Upcoming Remedy Design Schedule

July: Atlantic Richfield's Diggings East (waste removal and stormwater treatment basin) 95% Design.

Sept: Atlantic Richfield's Butte Reduction Works (waste removal, groundwater capture, and stream restoration) 60% Design.

Sept: Atlantic Richfield's Northside Tailings/East Buffalo Gulch Area Remedial Design 60%

DEQ's Blacktail Creek Riparian Actions (waste removal and stream restoration) 30% Design was most recently in DEQ legal review and was expected to be released May. We were not given an update on the schedule for this.

Atlantic Richfield's Butte Priority Soils Groundwater Remedy Optimization 30% Design was previously planned to be released in July. Its release date is now to be determined - TBD.