



CTEC



May 2024 Superfund Update

Current Activities

Diggings East 60% Remedial Design Released

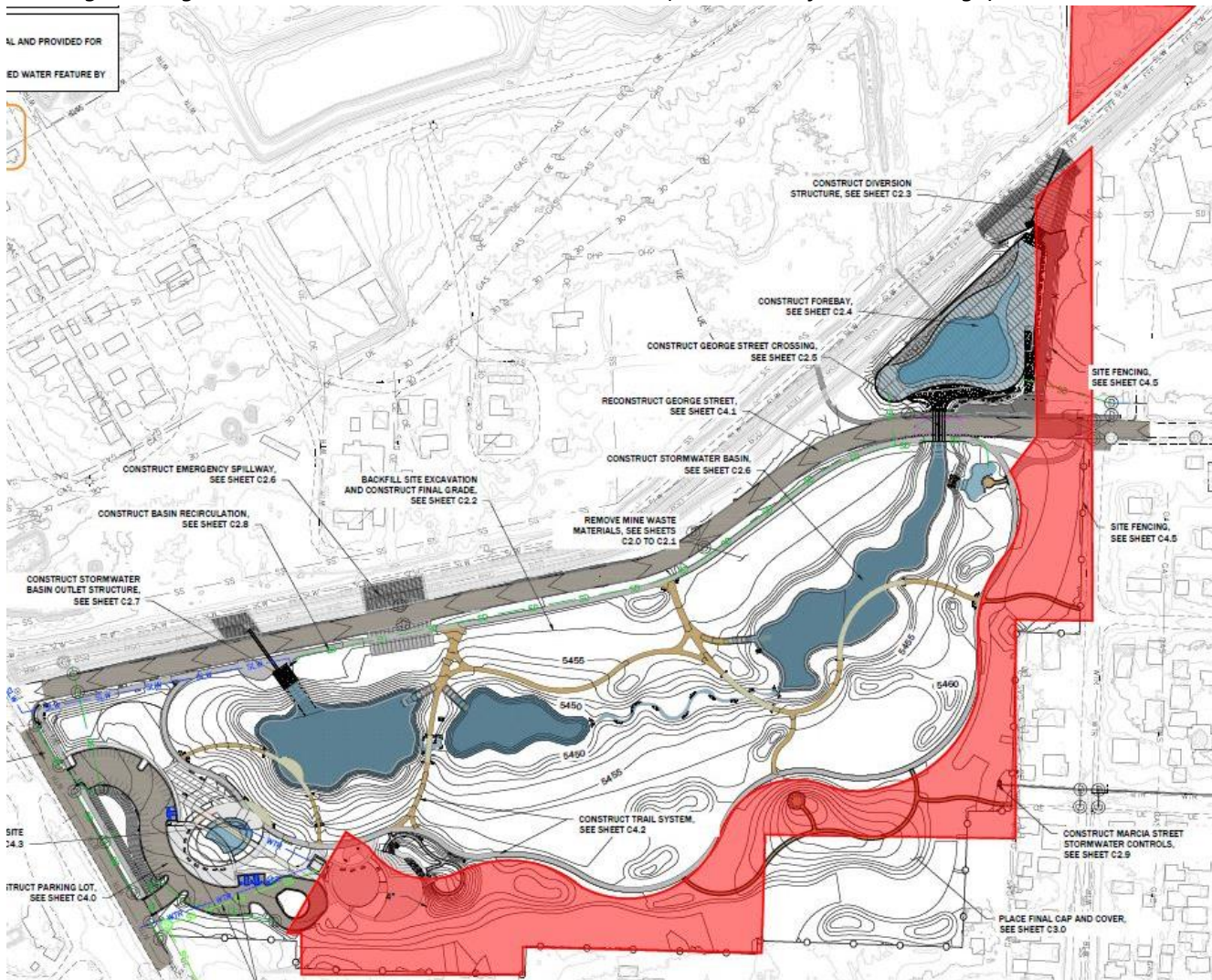
The Diggings East are a historic mining tailings impoundment located south of George St. The tailings are the result of dams constructed in the late 1800s and early 1900s to clarify creek water flowing down from the Parrot and Montana Ore Purchasing Company smelters towards the Butte Reduction Works. The Superfund remedy will remove the tailings down to the seasonal high groundwater table and storm basins will be constructed to treat stormwater runoff from the Butte Hill.

The drawings below show the stormwater basin and park features. Stormwater features include a forebay where much of the storm sediment settles out and the storm ponds which provide additional treatment for metals, to protect Silver Bow Creek. The ponds will be lined to prevent leakage. The design also includes an area that connects to the currently dry Upper Silver Bow Creek channel (formerly the Metro Storm Drain) that is set aside for Restore Our Creek to construct a flowing stream in the future.

Drawing showing the Diggings East stormwater basins, park, and trail plan (from Atlantic Richfield 60% Design)



Drawing showing the Restore our Creek set aside area in red (Atlantic Richfield 60% Design)



Summer 2024 Park Remediation

This summer, Atlantic Richfield will lead cleanup of two Walkerville public parks under purview of the Residential Metals Abatement Program (RMAP). The parks are located in the alley of North Main/West Daly and corner of Walkerville Dr and Ryan Rd.

Publicly Observable Superfund Remedy Design Meetings

June 11 9:00-10:00 AM: RMAP progress meeting

June 18 9:00-11:00 AM: BPSOU Consent Decree Remedial Design/Remedial Action Progress Meeting

Publicly observable meetings can be accessed by signing up for EPA's Butte Superfund email newsletter by emailing Community Involvement Coordinator Katherine Jenkins at jenkins.katherine@epa.gov.

Upcoming Remedy Design Schedule

The Final Repository Screening Report is done. Atlantic Richfield will present the findings at CTEC's June 10 meeting 7 PM at the Butte Archives.

The Blacktail Creek Hydraulic Control 30% design and updates to the Sitewide Groundwater Model are expected to be done mid-July.

The Buffalo Gulch 95% design is expected to be done in mid-July.